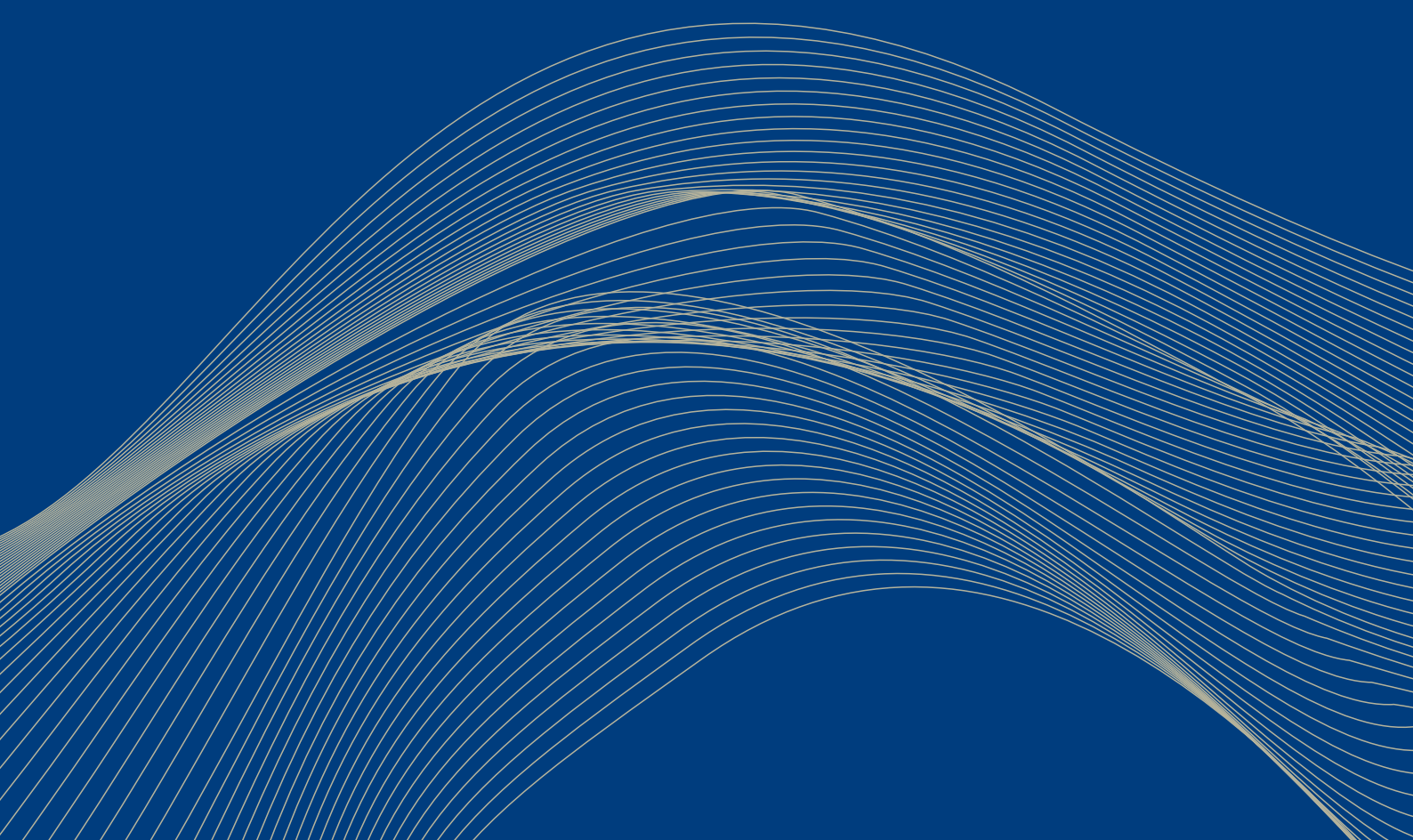


# FEED MACHINE SPARE PARTS

## INTRODUCTION

Factory-direct customized and produce different sizes of pellet mill dies, rollers, hammer mill beaters, screens, pulverizer ring gears, hammer head and etc.

YEARS  
**30+**

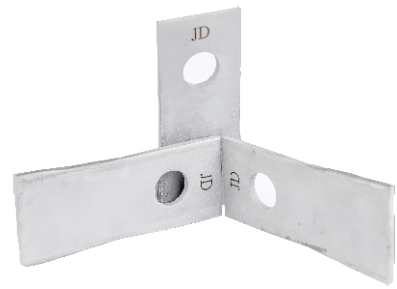




■ Ring Die



■ Roller Shell



■ Hammer Blade



■ Hammer Screen



■ Ring Gear



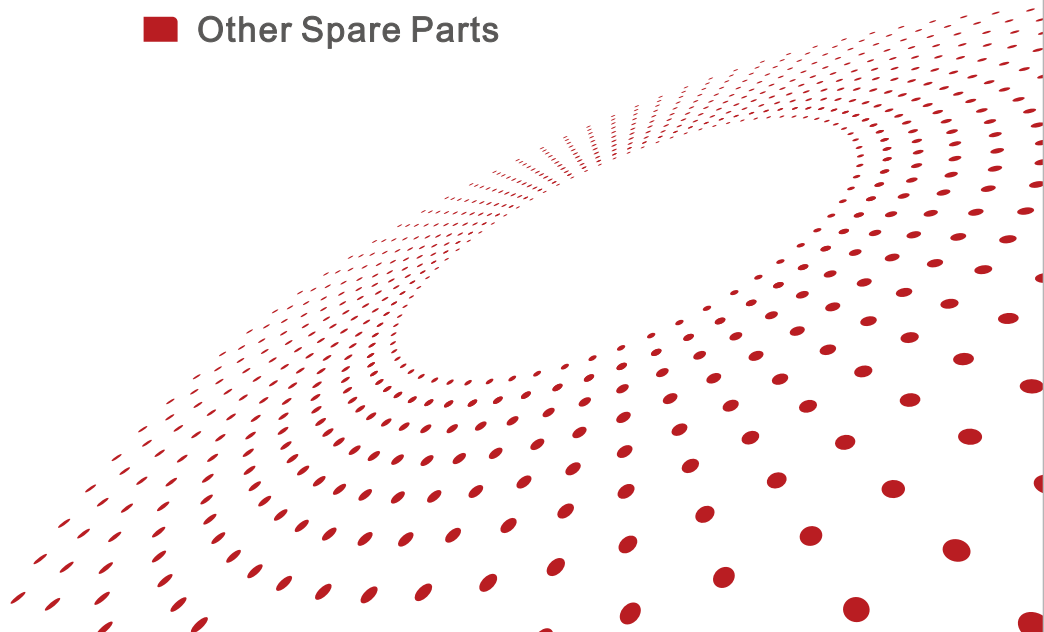
■ Hammer Head

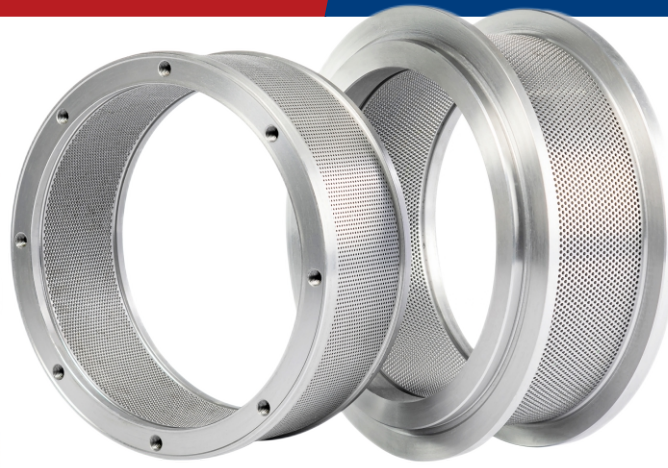


■ Flat Die



■ Other Spare Parts

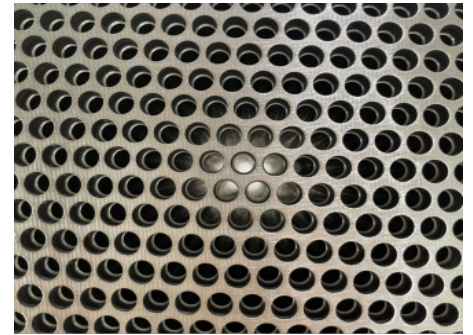
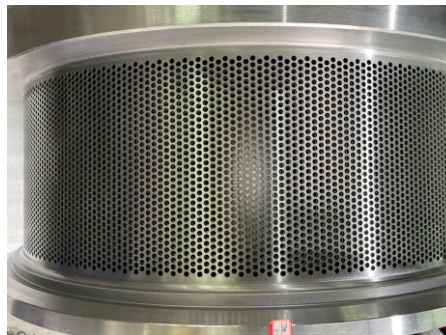




### Measuring hole

### Working area

### Hole detail



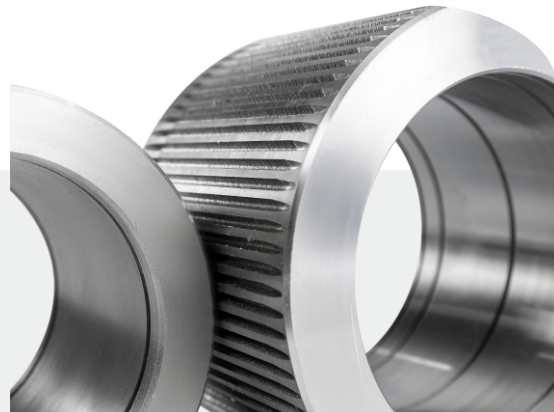
Type	Bolt, Clamp
Material	X46Cr13
Inner diameter	Any size above 320mm
Hole diameter range	φ0.6-16.0mm
Hole pattern	Horizontal or vertical arrangement
Compressed ratio (L/D)	Customized
Heat treatment	Vacuum heat treatment
Hardness	HRC 52-55
Production period	Around 3 weeks
Yield	The actual data is determined by several factors such as ingredients quality, formula composition, operating level etc.
Technical specifications	<ol style="list-style-type: none"> <li>1.The pressure ratio will be recommended based on the formula and materials.</li> <li>2. Roller shell of the same machine model along with the dies can be provided and customized.</li> </ol>



## ■ Roller Shell

## ■ Roller Assembly

Material	100Cr6, 20CrMnTi, 40Cr, 16MnCr15, etc.
Type	Corrugated, open-end, closed-end, dimpled and etc.
Inner diameter	Any size above 80mm
Outside diameter	Within 500mm
Hardness	HRC 58-62
Production period	Around 2 weeks
Yield	The actual data is determined by several factors such as ingredients quality, formula composition, operating level etc.
Technical specifications	<ol style="list-style-type: none"> <li>1. Roller shell can be divided into open corrugation and dimpled.</li> <li>2. Corrugation type of roller can be divided into: coarse teeth, fine teeth, open teeth and closed teeth.</li> <li>3. Material of the ingredients and size of the ring die determine the specific model.</li> </ol>





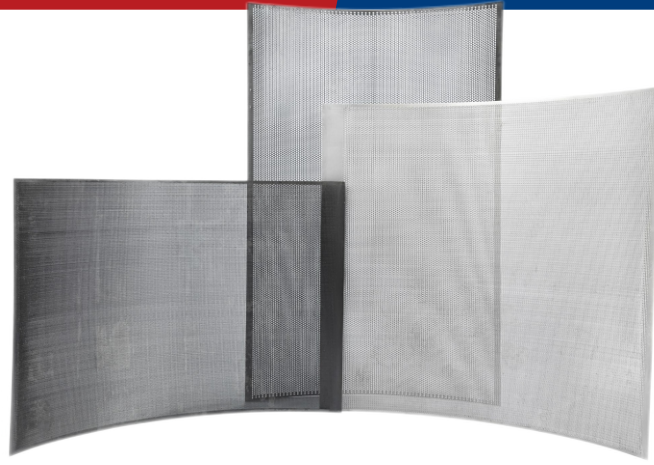
▶ Without tungsten carbide

▶ With tungsten carbide

▶ With tungsten carbide and after sandblasting

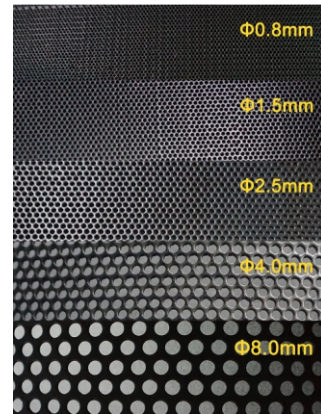
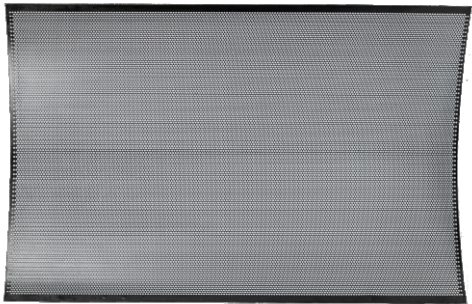
▶ Shape variety

Material	Q355	Q355	Q355
Thickness	3-8mm	3-8mm	3-8mm
Surfacing hardening material	/	Tungsten carbide	Tungsten carbide
Heat treatment	Nitriding Heat Treatment	Nitriding Heat Treatment	Nitriding Heat Treatment
Hardness	Hole area < HRC 28, Corners area: HRC 58-62	Hole area < HRC 28, Corners area: HRC 58-62 Tungsten carbide: HV 2375	Hole area < HRC 28, Corners area: HRC 58-62 Tungsten carbide: HV 2375
Production period	Around 1 week		
Yield	The actual data is determined by several factors such as ingredients quality, formula composition, operating level etc.		
Technical specifications	<ol style="list-style-type: none"> <li>1. A variety of styles are available, such as round head, a waist cut, an angle cut, a corner wrap, serrated, and more.</li> <li>2. Tungsten carbide welded to increase wear resistance.</li> <li>3. Product appearance can be maintained by sandblasting.</li> </ol>		



Hole

Different hole aperture



Material	ST12, DC01
Aperture Size	0.6-20.0mm
Thickness	0.6-3.0mm
Hardness	HV150-180
Heat treatment	Nitriding Heat Treatment
Surface nitriding depth	0.20-0.30mm
Production period	Around 1 week
Yield	The actual data is determined by several factors such as ingredients quality, formula composition, operating level etc.
Technical specifications	<ol style="list-style-type: none"> <li>1. Unique sieve pattern with high smoothness, no continuous holes.</li> <li>2. In order to maximize the yield, we design the optimal opening rate based on customer requirements (please note that too high opening rates might increase the risk of damage during use).</li> </ol>



Ring Gear with welded alloy

Ring Gear tooth



▶ Semi-finished product

Material	Q235+YG15
Type	Integral or split
Outside diameter	Within $\phi 2500\text{mm}$
Hardness	HRA 90-92
Production period	Around 2 weeks
Yield	The actual data is determined by several factors such as ingredients, quality, formula composition, operating level etc.
Technical specifications	<ol style="list-style-type: none"> <li>1. Welded alloys improve wear resistance and crushing efficiency.</li> <li>2. Customize the number of teeth, depth of the tooth surface, clockwise/anti-clockwise, integral/segmented tooth surface parameters.</li> <li>3. The same machine model of hammer head can also be provided and customized.</li> </ol>



Hammer Head with welded alloy



Material	ZK10UF
Type	Clockwise and counterclockwise tooth shape
Hardness	HRC92.2
Production period	Around 2 weeks
Yield	The actual data is determined by several factors such as ingredients quality, formula composition, operating level etc.
Technical specifications	<ol style="list-style-type: none"> <li>1. Welded alloys increase wear resistance and crush efficiency.</li> <li>2. Multi-faceted hammer heads ensure higher wear resistance and longer service life.</li> <li>3. Weight error for each set of hammer heads is within <math>\pm 1g</math>, and counterweights are provided.</li> </ol>





Hole

Machine center



Material	H13
Diameter	Above 300mm
Hole diameter	Above $\phi 0.5\text{mm}$
Opening rate	Depends on the number of hole and the size of diameter
Heat treatment	Vaccum heat treatment
Hardness	HRC49-52
Production Period	Around 2 weeks
Yield	The actual data is determined by several factors such as ingredients quality, formula composition, operating level etc.
Technical specifications	The flat die models can be produced and customized based on customer's drawings.

## For Ultra-fine Pulverizer



■ Wear-resisting plate



■ Steel Classifier Wheel



■ Pulverizer Airflow Cover

## For Pellet Mill



■ Pellet Mill Dust Cover



■ Safety Pin



■ Eccentric Shaft

## For Pellet Mill



■ Blade



■ Reinforcement Ring



■ Pellet Mill Die Cover

For more products, please contact us!

# Service Process

-  • Information acquisition
-  • Parameters design
-  • Product manufacturing
-  • Delivery
-  • After-sales guidance

## Service

24/7 global delivery and after-sales support

We offer tailor-made products based on customer needs

We offer customer-specific inventory plans

Short leading time

From raw materials to any subsequent steps, we regularly inform our customers about our manufacturing processes

We are willing to listen to the voice of our customers with any suggestion that can improve our products and services

01 [www.jdringdie.com](http://www.jdringdie.com)

02 **Mail**  
jdclaire@jdringdie.com , jdelvina@jdringdie.com

03 **Whatsapp**



04 **Tel**  
+86 13778805800, +86 13550539790

05 **Add**  
#128.W.4th,Qitong Rd.,Meishan,Sichuan,China

